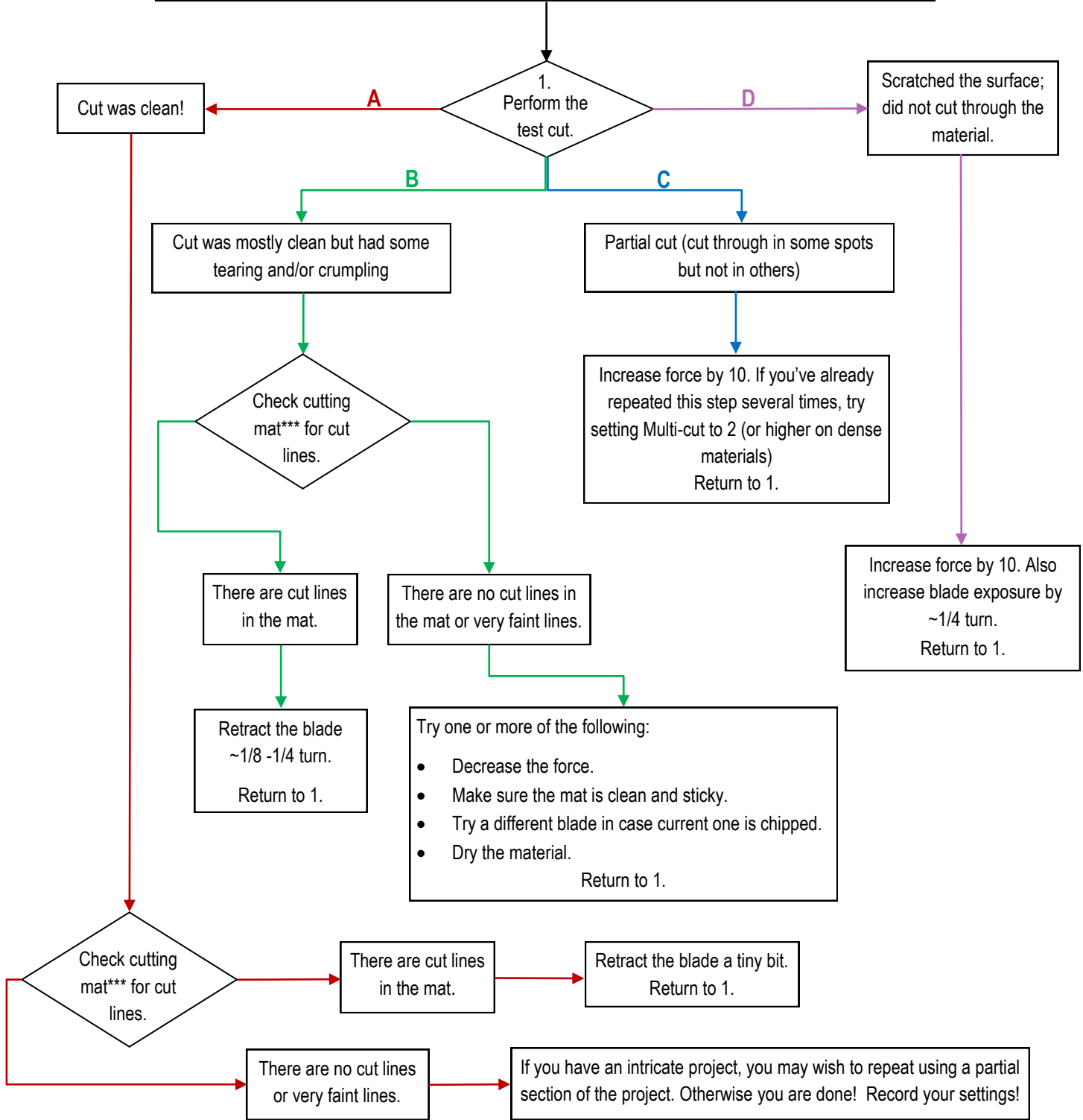


# Guide to Test Cutting on the KNK Zing / Zing Air

© 2014-2105 Sandy McCauley All Rights Reserved

- Create a small shape or use a shape from the test cut menu.
- Start with conservative settings. Refer to a similar material in the *Suggested Cut Settings Table*.
- Use Knife Point mode and set origin in the lower right corner of the material.
- Allow for some “punch room” (distance between the blade tip and the top of the material).
- After each test, slide the mat forward so that the next test will be directly above the prior one.



\*\*\* or backing sheet, such as with vinyl